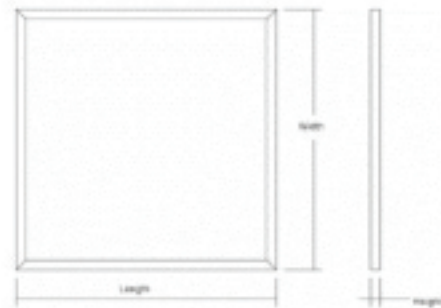




LED Panel Light

Series: PLD

Model: 01~05

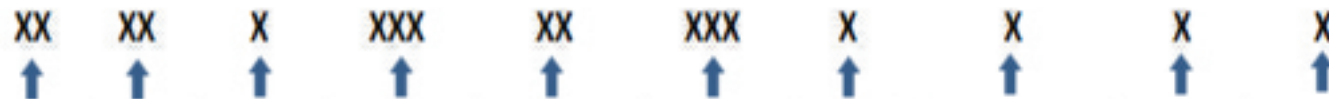


Applications:

- Home
- Office
- Hospital
- Wall Art
- Warehouse
- Meeting Room



Example Part # PLD01DX1807W5526GF S



Series	Models (Standard)	Dim or Non-Dim	Watts	Volts	Color	Base	Beam	Lens	Frame
PLD(UL or ETL/DLC)	03 - 600 X 600	D - YES (0-10vdc)	X36-36W	10-100~277Vac	W30-2000K	26 - Bare Wire	G-120	F=Frosted	S-Silver
	04 - 300 X 1200	N - NO	X40-40W		W40-4000K				W-White
	05 - 600 X 1200		X50-50W	W50-5000K					
			X60-60W						
			X50-50W						
		X60-60W							
		X70-70W							

Part #	Power	Size
PLD04_X4010W__26GFW__	40W	1' x 4'
PLD04_X4010W__26GFW__	50W	1' x 4'
PLD03_X3610W__26GFW	36W	2' x 2'
PLD03_X4010W__26GFW	40W	2' x 2'
PLD03_X5010W__26GFW	50W	2' x 2'
PLD03_X6010W__26GFW	60W	2' x 2'
PLD05_X5010W__26GFW	50W	2' x 4'
PLD05_X7010W__26GFW	70W	2' x 4'

Basic Parameters	
Series:	PLD
Color temperature:	Warm white (3000k) Neutral white (4000k) Pure white (5000k) RGB, R, G, B
PF:	>.93
THD:	<15%
CRI:	>70
Beam angle:	140°
Materials:	Aluminum+PMMA Lens
Working environment:	-25~+45deg C
Lifespan L70:	100,000 Hours
Input Voltage	DC12v, AC 100~277
Driver Type:	External driver UL
Efficacy	105 Lm/W