



FEATURES AND BENEFITS

- Type B T5 is an energy saving product as special replacement for traditional fluorescent T5 lamps.
- 2 in 1: Simple installation: Single and Double-ended ballast bypass.
- Reduces energy consumption up to 60%.
- Shatterproof design: meets NSF requirements
Automatic production, high product consistency.

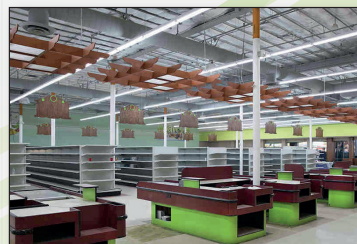
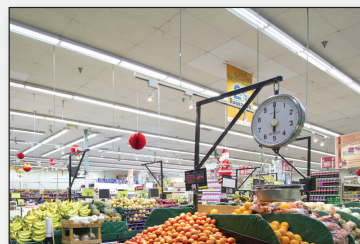


SPECIFICATIONS

Body	Glass PET film/Glass with painting inside
End cap	G5
Lens	Frosted
Input Voltage	120-277VAC, 50/60hz
Power Factor	>0.9
Available colors	3000K/3500K/4000K/4500K/5000K
CRI	>83
Dimming	Non-dimmable
Lifetime	65,000 Hrs
Warranty	10 Year
Environmental Requirements	Operation temp:-20°C -45°C Storage temp:-20°C to3°C Relative Humidity:45%-85% Non-corrosive environments
Size	A(max):1149.0 mm B(min):1153.7 mm B(min):1156.1 mm C(max):1163.2 mm D(max):16 mm

APPLICATIONS

- Offices, hotels, retail stores, schools, universities, and supermarkets.



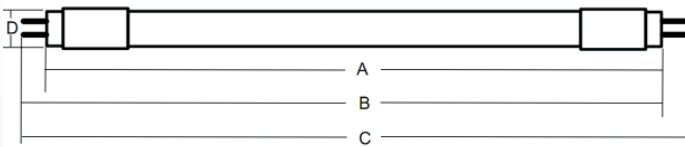
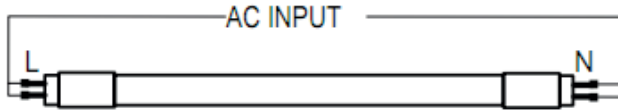
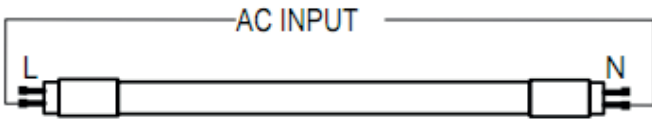


WIRING DIAGRAM

TYPE B(AC directly, single and double end ballast bypass) - Assembly introduction:



OR



SPECIFICATIONS

Item No.	Power	CCT	Lumen	CRI	Voltage	Frequency	PF	Beam Angle
PVT5-2FT-7WB1	7W	4000K	950lm	Ra83	AC120-277V	50/60Hz	0.9	270°
PVT5-2FT-12WB1	12W	4000K	1600lm	Ra83	AC120-277V	50/60Hz	0.9	270°
PVT5-3FT-12WB1	12W	4000K	1800lm	Ra83	AC120-277V	50/60Hz	0.9	270°
PVT5-3FT-18WB1	18W	4000K	2500lm	Ra83	AC120-277V	50/60Hz	0.9	270°
PVT5-4FT-15WB1	15W	4000K	2300lm	Ra83	AC120-277V	50/60Hz	0.9	270°
PVT5-4FT-24WB1	24W	4000K	3200lm	Ra83	AC120-277V	50/60Hz	0.9	270°
PVT5-4FT-24WB1	24W	4000K	3600lm	Ra83	AC120-277V	50/60Hz	0.9	270°
PVT5-5FT-18WB1	18W	4000K	2200lm	Ra83	AC120-277V	50/60Hz	0.9	270°
PVT5-5FT-24WB1	24W	4000K	3200lm	Ra83	AC120-277V	50/60Hz	0.9	270°

Mark: CCT:3000K,3500K,4000K,4500K,5000K,6500K all available.

