



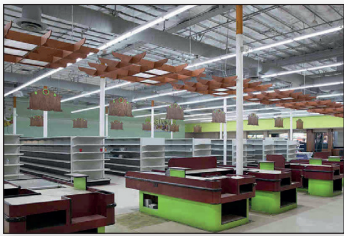
## FEATURES

- 70% energy saving compared with fluorescent lamps.
- Soft and uniform light. No glare & no flickering Wide beam angle@ >250.
- Hi-pot test – 3000V passed.
- Premium & PC Lamp holder. Flame retardant rating – V0.
- 12 year warranty / 75,000 Hrs.



## APPLICATIONS

- Schools, offices, hospitals, supermarkets, retails, and factories.



## APPROVAL



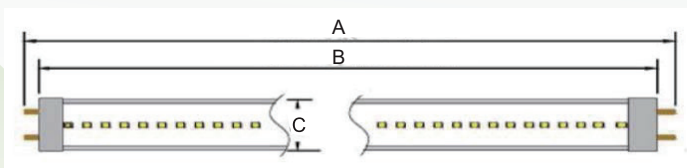
## CERTIFICATIONS

UL, DLC

## LIGHTING PARAMETERS

Length	Part No.	Input Voltage	Power	Color	Luminous Flux	Ra	LED Type
2T	T8-10W-60-GTB	AC100-277V	10W	3000K 4000K 5000K	150 lm/W	>80	SMD2835
4FT	T8-14W-120-GTB	AC100-277V	14W				
	T8-15W-120-GTB	AC100-277V	15W				
	T8-16W-120-GTB	AC100-277V	16W				
	T8-18W-120-GTB	AC100-277V	18W				

## DIMENSION

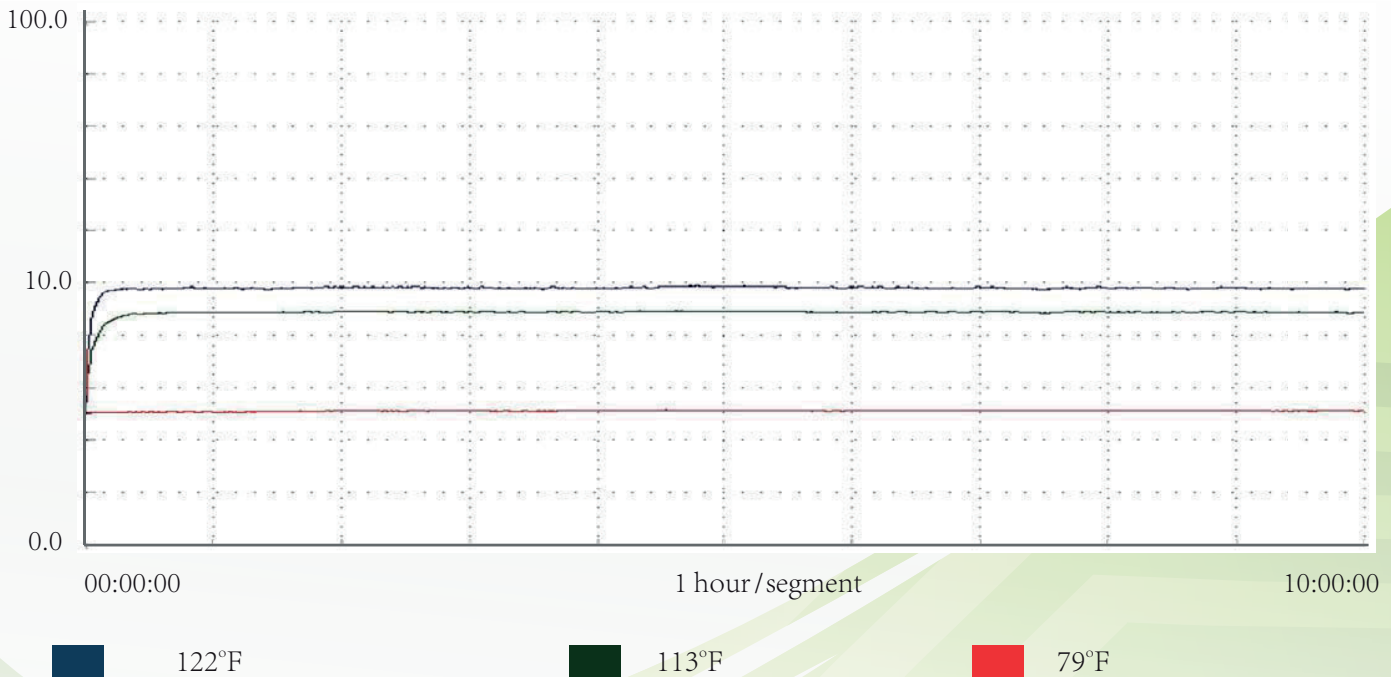
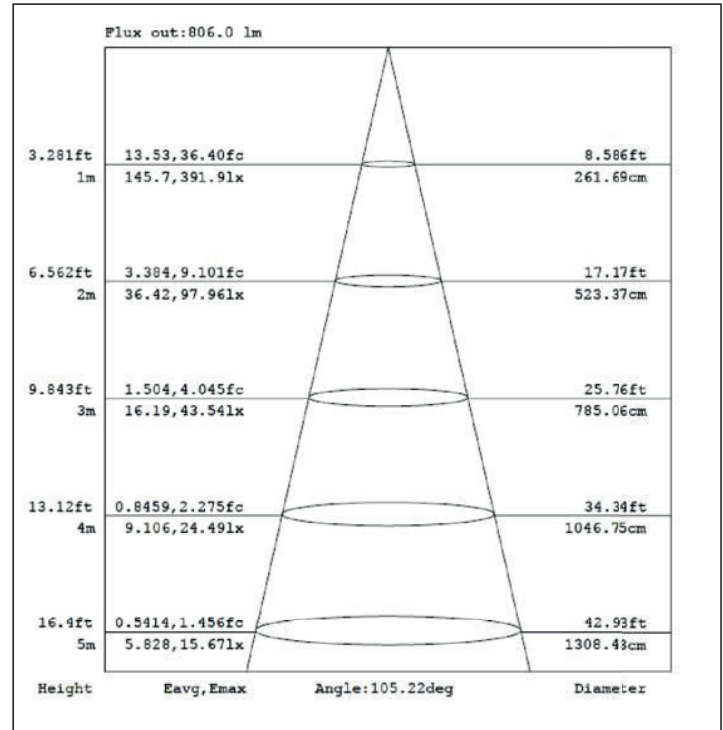
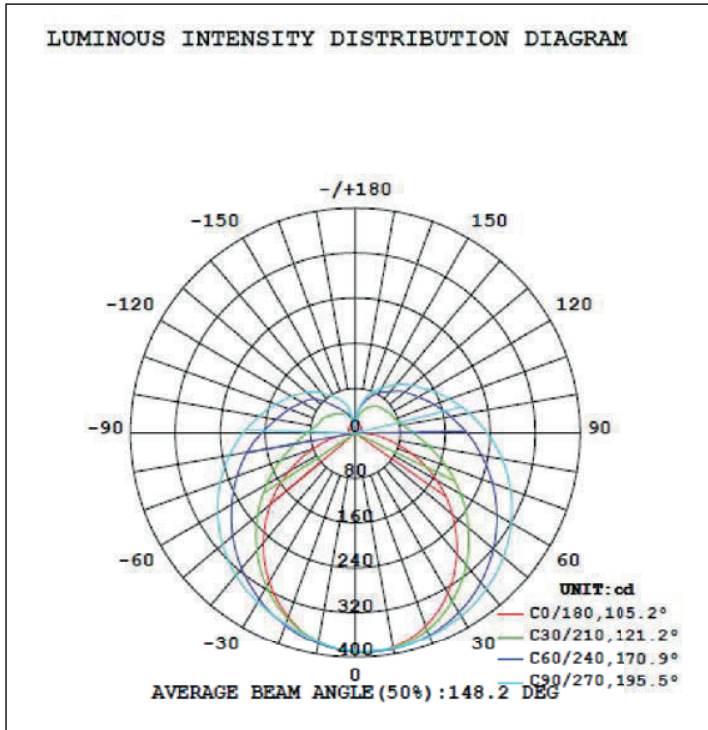


Size	A	B	C	D
2FT	23.7"	23.15"	1.02"	0.50"
4FT	47.72"	47.17"	1.02"	0.50"



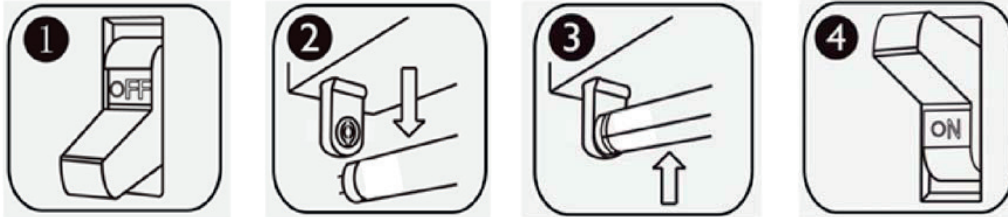


## OPTICAL PROPERTIES

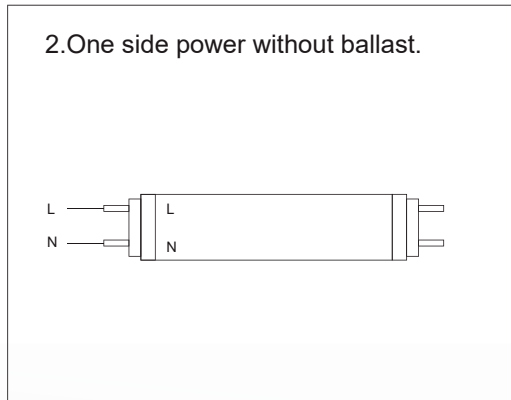
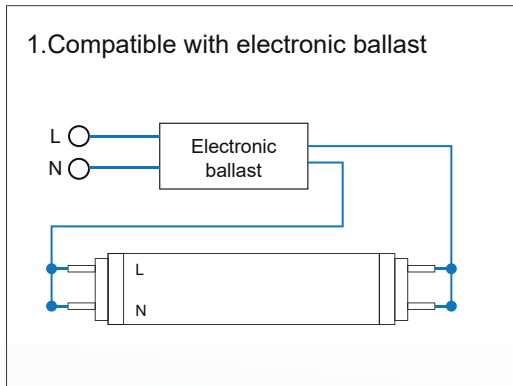




INSTALLATION - RETORFIT / ELECTRONIC BALLASTS SYSTEM



1. Turn off power.
2. Remove the existing fluorescent lamp.
3. Insert LED T8 lamp.
4. Turn power back on and check for proper operation.

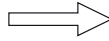




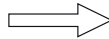
PACKING INFORMATION

MODES OF PACKING	SIZE	OUTER BOX (W X L X H)	QTY/CTN (PCS)	NW/PCS (LBS)	GW/CTN (LBS)
Paper Tube	2FT	24.4" x 11.6" x 7.68" 620 x 295 x 195mm	40	0.2	14
	4FT	48.42" x 11.6" x 7.68" 1230 x 295 x 195mm		0.33	26
Plastic	2FT	24.8" x 14.37" x 7.09" 630 x 365 x 180mm	45	0.2	9.53
	4FT	48.8" x 14.37" x 7.09" 1240 x 365 x 180mm		0.33	17.5

1.  
Paper tube



2.  
Plastic



WARRANTY

This product has a warranty for a period of 12 years from the date of purchase. The warranty is invalid in the case of improper installation, tampering, or removal of the Q.C. date label. Installation in an improper working environment or installation not according to the current edition of the National Electric Code also invalidates the warranty. If this product fails during the warranty period, it will be replaced free of charge, subject to correct installation and return of the faulty unit. GLO4LED does not take responsibility for any installation costs associated with the replacement of this product. This warranty is an addition to the statutory rights in the country of purchase. GLO4LED reserves the right to alter specifications without prior notice.

