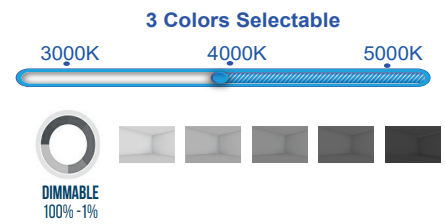




FEATURES AND BENEFITS

- 3 Color Temperature Selectable - SELECT COLOR TEMPERATURE WITH A FLICK OF A SWITCH! 3000K 4000K OR 5000K
- HIGH BRIGHTNESS - 2400 luminous intensity output, perfectly meet your daily lighting need. Ideal for living room, bedrooms, kitchen, hallways, stairways, offices and other commercial or residential places.
- NO CAN NEEDED - An all-in-one design, each LED recessed light has an attached jbox which is the perfect can-less alternative to your standard recessed ceiling light.
- SAVE ENERGY - Reduce your electricity usage with an 8 inch LED retrofit kit that only uses 15 watts of power, effectively cutting the cost of your monthly electricity bill! A flawless replacement to your normal 180 watt can lights for ceiling.
- EASY INSTALL - No hassle installation with these LED recessed lighting retrofit kit fixtures which can be set up in a couple easy steps! Just connect the direct wiring in the junction box and insert the fixture into your ceiling with the spring loaded clips!
- WARRANTY - 10 year / 65,000 Hrs.



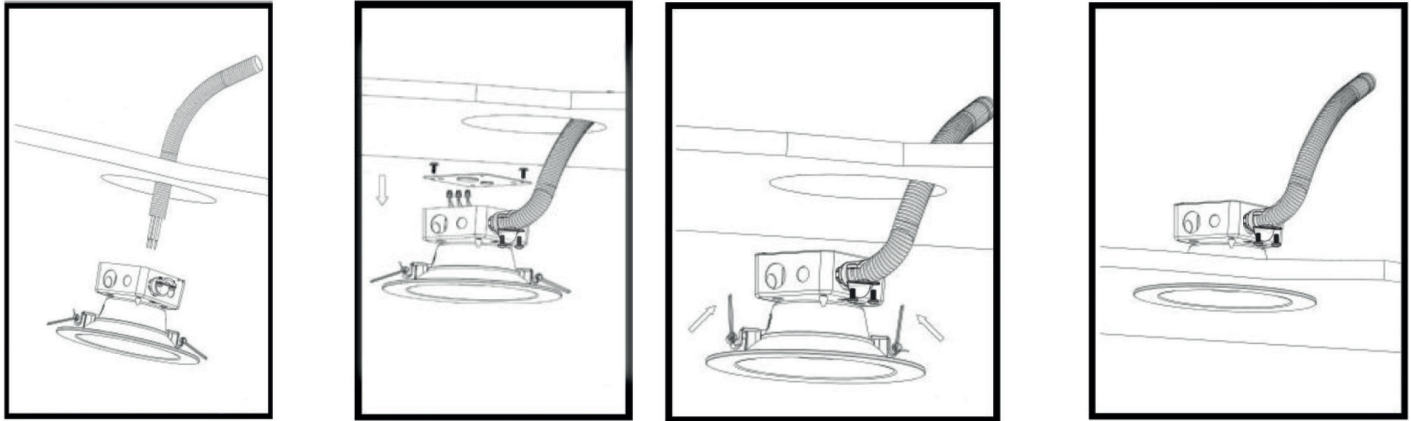
ORDER INFORMATION

Part No.	Power	Replaces	Lumens	CCT	Material	Certification	Input Voltage
YGCL-24X-ETL	24W	100W HD	2400LM	3 Color in 1	AL+PC	ETL	100-277V 50/60Hz 0-10V Dimmable



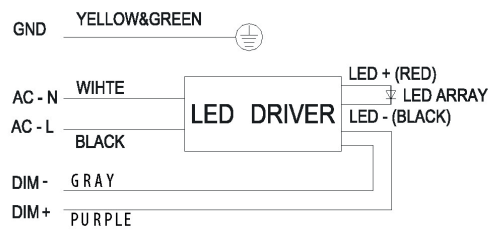


INSTALLATION INSTRUCTIONS



1. Shut off power before installation. Cut a corresponding hole in the ceiling. A template is provided to assist with laying out hole location. When running the supply wires, allow an additional 18" of wire at each fixture in order to make electrical connections on room side of hole.
2. Remove junction box cover. Install supply wire(s) through knockout hole on junction box according to local codes. Connect wires black to black, white to white, and green to green. Make sure all connections are secure, tuck all wires inside junction box and reinstall junction box cover.
3. Press top portion of spring clips against side of housing assembly.
4. Push fixture and spring clips through the hole until spring clips snap into place and the trim is tight against the ceiling surface.

WIRING DIAGRAM



Electric Shock Attention

Ensure the power supply has been cut off before connecting the wire, and all wiring and installation of this product are required to be operated by professionals.